

Playing on DrawnForest Minecraft Servers

Contents

Java Server – Spruce Wood’s Modded Server	1
Requirements.....	1
Installing the right version of Minecraft	1
Windows Instructions	2
Installing the Fabric Loader.....	2
Installing the Mods.....	4
Modlist	4
How to Install	6
Connecting to the Server	10
Renaming the Fabric 1.20.1 Install	16
Using a Gamepad/Controller on Java Minecraft.....	17
Playing Minecraft: Java Edition on Unofficial Clients	17
Installing Minecraft: Java Edition on Android Devices	18
Installing Minecraft: Java Edition on iOS Devices.....	19
Bedrock Server - Empire.....	19

Java Server – Spruce Wood’s Modded Server

This server will only allow connections from Minecraft: Java Edition. Official clients are available on Windows, Mac, and Linux. There are workarounds for getting Minecraft: Java Edition onto iOS (iPad/iPhone) devices and Android devices – performance on these devices will vary greatly depending on the device, see Playing Minecraft: Java Edition on Unofficial Clients for more information.

Requirements

You will need the following to get connected to the server:

- Minecraft Java Edition
- Fabric Loader
- Mods (listed below under [Installing the Mods](#))

Installing the right version of Minecraft

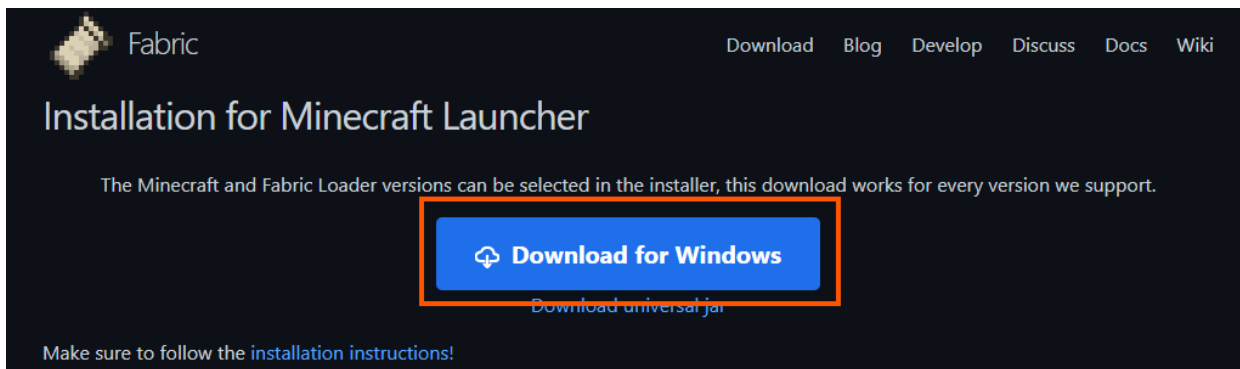
This document assumes you’ll be using the Windows version of Java Minecraft.

Windows Instructions

- 1) Install the Minecraft Launcher from the Xbox App or the Microsoft Store App. Don't install Minecraft for Windows or Java Minecraft directly, you'll need to use the Minecraft Launcher for the Fabric Loader to work.
- 2) After the installation has finished, close the Minecraft Launcher.

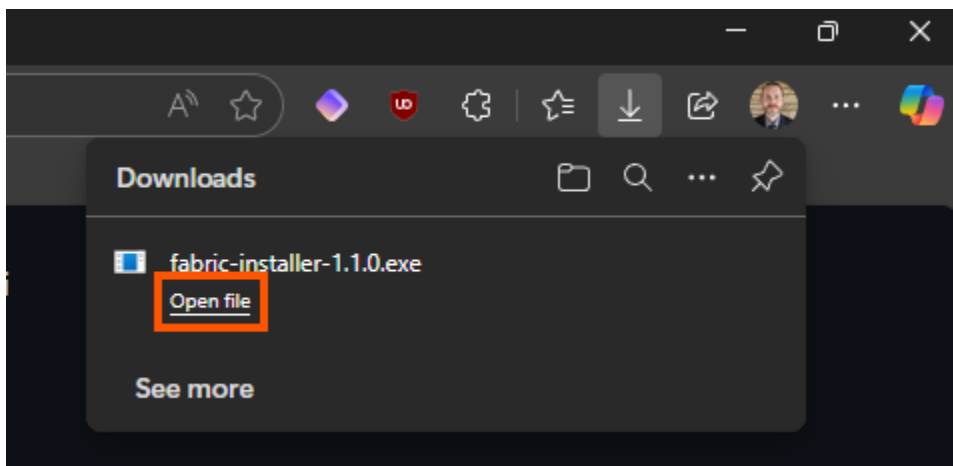
Installing the Fabric Loader

Next you will need to install the Fabric Loader so that you can install the Mods you'll need to play on the server. You can download the loader directly from here: <https://maven.fabricmc.net/net/fabricmc/fabric-installer/1.1.0/fabric-installer-1.1.0.exe>, or visit <https://fabricmc.net/use/installer/> to make sure you're getting the latest version (click on the big blue Download for Windows button).

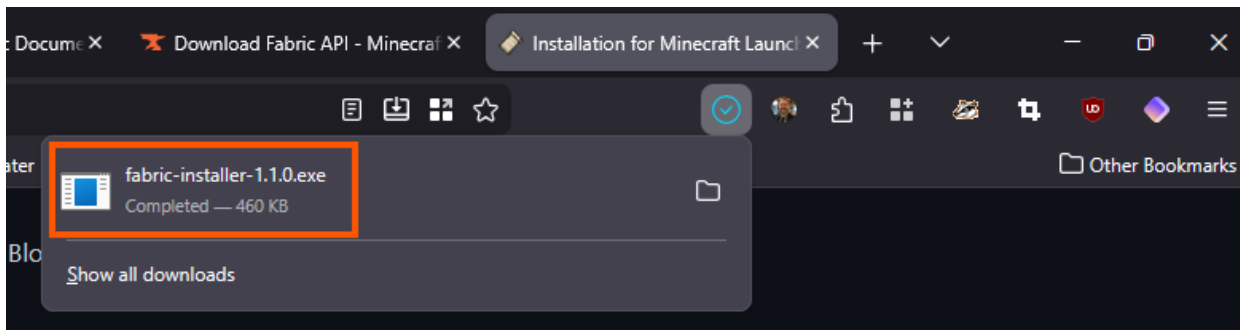


Once the Fabric Loader has completed downloading you'll need to install it. You can launch the installer by single-clicking on the download from your browser or by finding it in your Downloads folder in File Explorer and double-clicking on it from there.

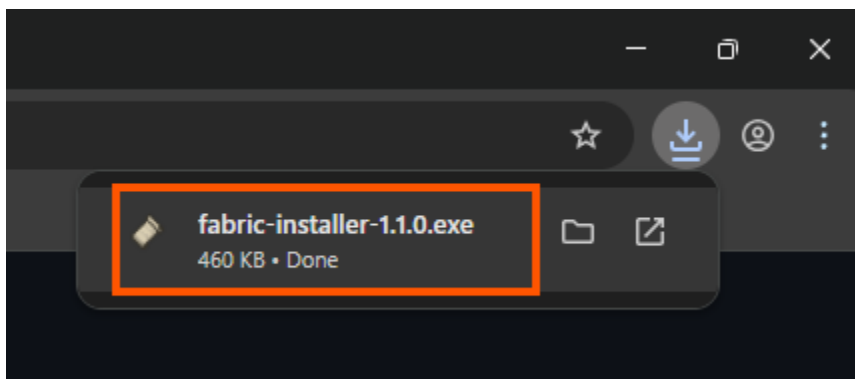
The downloads locations in each browser will look slightly different, here is how it will look in Edge, Firefox, and Chrome (respectively):



Downloads location in Microsoft Edge Toolbar

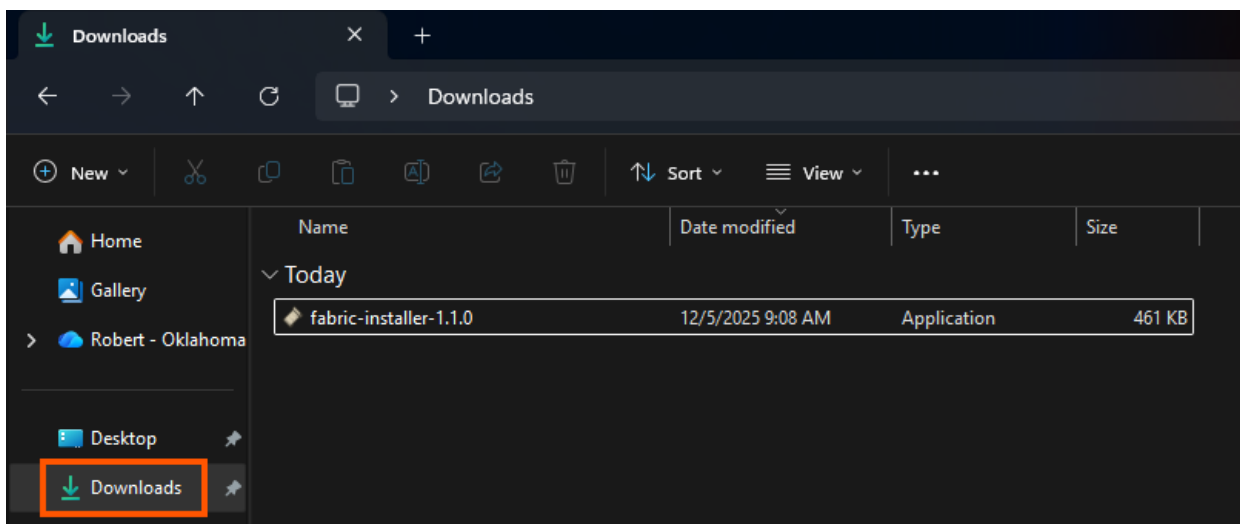


Downloads location in Mozilla Firefox

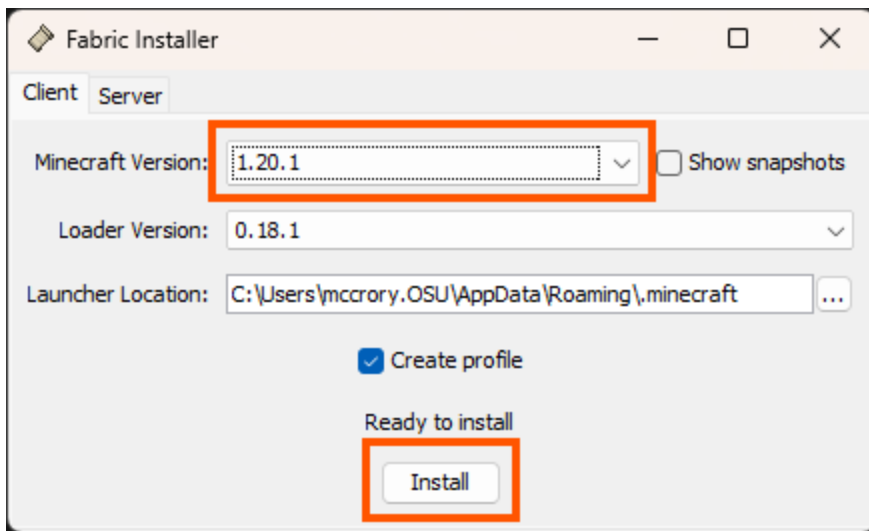


Downloads location in Google Chrome

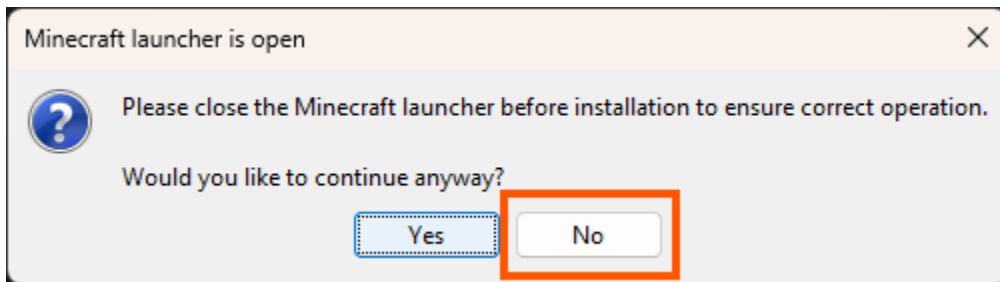
If you miss the Download notification in your browser and the Downloads button isn't on the toolbar you can find it by clicking on the 3 dots or 3 lines button in the top-right corner of the browser and looking for it in the menu that pops up. Alternatively, you can open File Explorer (press the **Windows Logo Key + E** at the same time on your keyboard, use the shortcut in the taskbar if it is there, or click Windows Logo on the taskbar and find it in the Start menu) and then double-click on it in the Downloads folder on the left menu.



The fabric installer will appear. Change the **Minecraft version** to **1.20.1** in the drop-down menu. Leave everything else alone, then click on the **Install** button.



If you forgot to close the Minecraft Launcher a new window will appear warning you to close it down before proceeding. Click **No** on this window, close the Minecraft Launcher, then click on the Install button again to try again. **DO NOT click on Yes to continue anyway.**



Installing the Mods

You can [download all the mods needed to play on the server from here](#) (easiest method), but I will also list them out individually below in case you want to download them all directly from CurseForge instead, or just want to see more information about what they are and what they do.

Modlist

You will need the 1.20.1 version of the following mods installed on your PC to be able to play on the server. The links below after the dashes are the direct downloads to the 1.20.1 versions of these mods, click on the name of the mod before the dash to see information about the mod instead of downloading it.

- [architecture-api](#) - <https://www.curseforge.com/minecraft/mc-mods/architecture-api/download/5137936>
- [arrp](#) - <https://www.curseforge.com/minecraft/mc-mods/arrp/download/5018841>
- [aquamirae-fabric](#) - <https://www.curseforge.com/minecraft/mc-mods/aquamirae-fabric/download/4656204>
- [athena](#) - <https://www.curseforge.com/minecraft/mc-mods/athena/download/5176880>
- [badpackets](#) - <https://www.curseforge.com/minecraft/mc-mods/badpackets/download/4784394>
- [bclib](#) - <https://www.curseforge.com/minecraft/mc-mods/bclib/download/4971470>

- [betterend](https://www.curseforge.com/minecraft/mc-mods/betterend/download/4971487) - <https://www.curseforge.com/minecraft/mc-mods/betterend/download/4971487>
- [better-end-cities-better-end](https://www.curseforge.com/minecraft/mc-mods/better-end-cities-better-end/download/5016441) - <https://www.curseforge.com/minecraft/mc-mods/better-end-cities-better-end/download/5016441>
- [betternether](https://www.curseforge.com/minecraft/mc-mods/betternether/download/4971478) - <https://www.curseforge.com/minecraft/mc-mods/betternether/download/4971478>
- [chipped](https://www.curseforge.com/minecraft/mc-mods/chipped/download/5813139) - <https://www.curseforge.com/minecraft/mc-mods/chipped/download/5813139>
- [cloth-config](https://www.curseforge.com/minecraft/mc-mods/cloth-config/download/5729104) - <https://www.curseforge.com/minecraft/mc-mods/cloth-config/download/5729104>
- [crafted-core](https://www.curseforge.com/minecraft/mc-mods/crafted-core/download/6187025) - <https://www.curseforge.com/minecraft/mc-mods/crafted-core/download/6187025>
- [cristel-lib](https://www.curseforge.com/minecraft/mc-mods/cristel-lib/download/4861834) - <https://www.curseforge.com/minecraft/mc-mods/cristel-lib/download/4861834>
- [darkheads](https://www.curseforge.com/minecraft/mc-mods/darkheads/download/5417104) - <https://www.curseforge.com/minecraft/mc-mods/darkheads/download/5417104>
- [emi](https://www.curseforge.com/minecraft/mc-mods/emi/download/6420944) - <https://www.curseforge.com/minecraft/mc-mods/emi/download/6420944>
- [extra-origins](https://www.curseforge.com/minecraft/mc-mods/extra-origins/download/5230043) - <https://www.curseforge.com/minecraft/mc-mods/extra-origins/download/5230043>
- [fabric-api](https://www.curseforge.com/minecraft/mc-mods/fabric-api/download/6601119) - <https://www.curseforge.com/minecraft/mc-mods/fabric-api/download/6601119>
- [fabric-waystones](https://www.curseforge.com/minecraft/mc-mods/fabric-waystones/download/6300601) - <https://www.curseforge.com/minecraft/mc-mods/fabric-waystones/download/6300601>
- [identity](https://www.curseforge.com/minecraft/mc-mods/identity/download/4687497) - <https://www.curseforge.com/minecraft/mc-mods/identity/download/4687497>
- [jei](https://www.curseforge.com/minecraft/mc-mods/jei/download/7270445) - <https://www.curseforge.com/minecraft/mc-mods/jei/download/7270445>
- [kraken-origin](https://www.curseforge.com/minecraft/mc-mods/kraken-origin/download/6423687) - <https://www.curseforge.com/minecraft/mc-mods/kraken-origin/download/6423687>
- [medievalweapons](https://www.curseforge.com/minecraft/mc-mods/medievalweapons/download/4819203) - <https://www.curseforge.com/minecraft/mc-mods/medievalweapons/download/4819203>
- [modmenu](https://www.curseforge.com/minecraft/mc-mods/modmenu/download/5162837) - <https://www.curseforge.com/minecraft/mc-mods/modmenu/download/5162837>
- [mothling-origin](https://www.curseforge.com/minecraft/mc-mods/mothling-origin/download/6285486) - <https://www.curseforge.com/minecraft/mc-mods/mothling-origin/download/6285486>
- [obscure-api-fabric](https://www.curseforge.com/minecraft/mc-mods/obscure-api-fabric/download/4656918) - <https://www.curseforge.com/minecraft/mc-mods/obscure-api-fabric/download/4656918>
- [origins](https://www.curseforge.com/minecraft/mc-mods/origins/download/7149656) - <https://www.curseforge.com/minecraft/mc-mods/origins/download/7149656>
- [origins-vampire](https://www.curseforge.com/minecraft/mc-mods/origins-vampire/download/5288930) - <https://www.curseforge.com/minecraft/mc-mods/origins-vampire/download/5288930>
- [owo-lib](https://www.curseforge.com/minecraft/mc-mods/owo-lib/download/4749199) - <https://www.curseforge.com/minecraft/mc-mods/owo-lib/download/4749199>
- [patchouli-fabric](https://www.curseforge.com/minecraft/mc-mods/patchouli-fabric/download/6164574) - <https://www.curseforge.com/minecraft/mc-mods/patchouli-fabric/download/6164574>
- [pehkui](https://www.curseforge.com/minecraft/mc-mods/pehkui/download/5419266) - <https://www.curseforge.com/minecraft/mc-mods/pehkui/download/5419266>
- [provis-origins](https://www.curseforge.com/minecraft/mc-mods/provis-origins/download/7234345) - <https://www.curseforge.com/minecraft/mc-mods/provis-origins/download/7234345>
- [resourceful-lib](https://www.curseforge.com/minecraft/mc-mods/resourceful-lib/download/5659872) - <https://www.curseforge.com/minecraft/mc-mods/resourceful-lib/download/5659872>
- [roughly-enough-items](https://www.curseforge.com/minecraft/mc-mods/roughly-enough-items/download/5846921) - <https://www.curseforge.com/minecraft/mc-mods/roughly-enough-items/download/5846921>
- [simple-emerald-tools-fabric](https://www.curseforge.com/minecraft/mc-mods/simple-emerald-tools-fabric/download/5129423) - <https://www.curseforge.com/minecraft/mc-mods/simple-emerald-tools-fabric/download/5129423>
- [terralith](https://www.curseforge.com/minecraft/mc-mods/terralith/download/5512076) - <https://www.curseforge.com/minecraft/mc-mods/terralith/download/5512076>

- [towns-and-towers](https://www.curseforge.com/minecraft/mc-mods/towns-and-towers/download/4593117) – <https://www.curseforge.com/minecraft/mc-mods/towns-and-towers/download/4593117>
- [trinkets](https://www.curseforge.com/minecraft/mc-mods/trinkets/download/5173501) - <https://www.curseforge.com/minecraft/mc-mods/trinkets/download/5173501>
- [woodwalkers](https://www.curseforge.com/minecraft/mc-mods/woodwalkers/download/7286541) - <https://www.curseforge.com/minecraft/mc-mods/woodwalkers/download/7286541>
- [wthit](https://www.curseforge.com/minecraft/mc-mods/wthit/download/7290862) - <https://www.curseforge.com/minecraft/mc-mods/wthit/download/7290862>

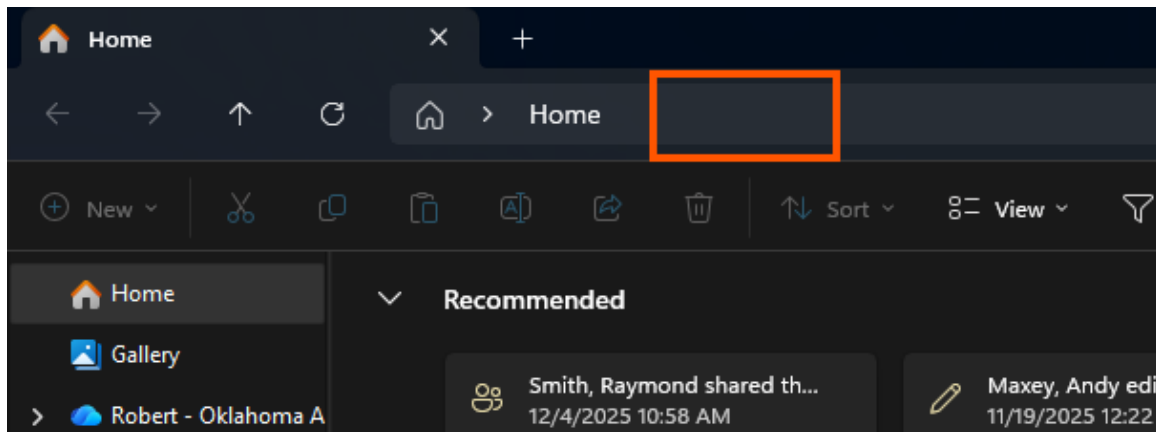
How to Install

Mods are installed by placing them into the user's mod folder before launching the game.

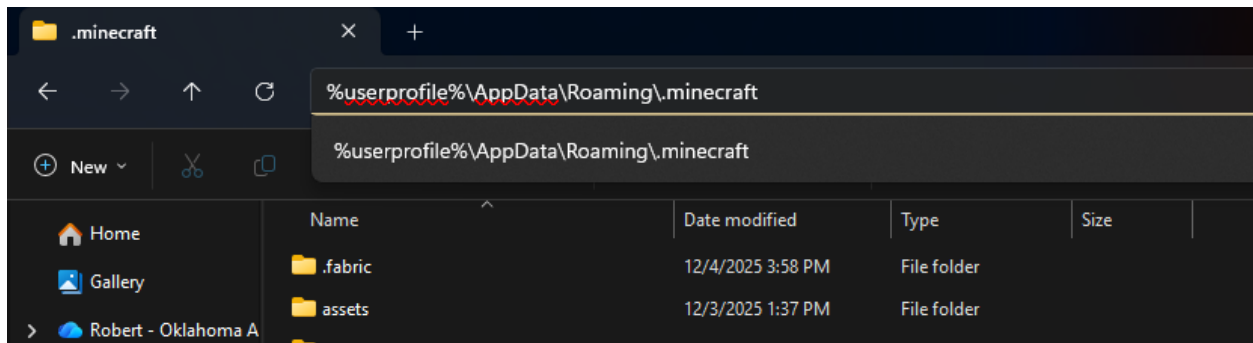
1. Copy the following path (highlight it with your mouse then right-click and select Copy, or highlight it with your mouse and press Ctrl+C at the same time to Copy):

%userprofile%\AppData\Roaming\.minecraft

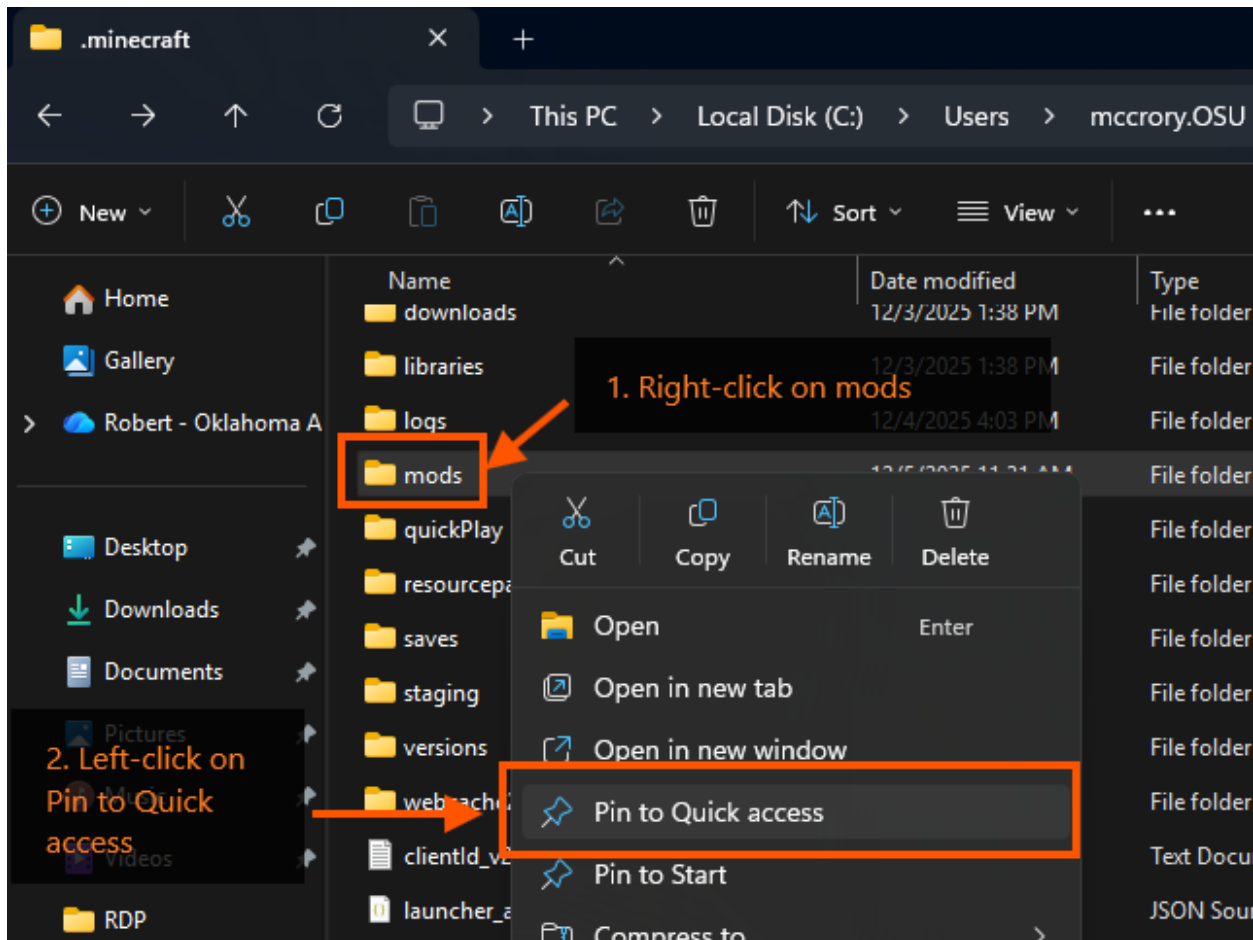
2. Open File Explorer (press the **Windows Logo Key + E** at the same time on your keyboard, use the shortcut in the taskbar if it is there, or click Windows Logo on the taskbar and find it in the Start menu).
3. Now click into the blank space in the address bar in File Explorer.



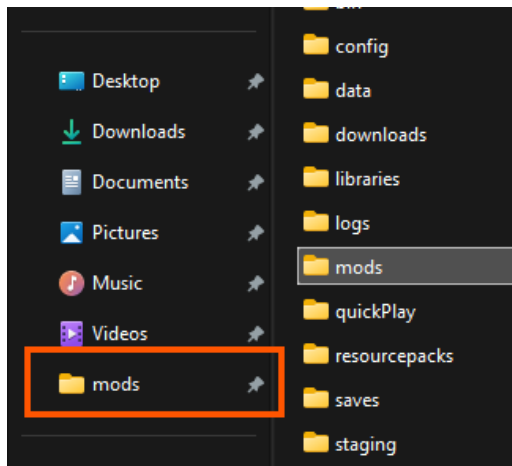
The address bar will change to show you the path of the current location. Delete it, and then paste the path you copied in step one into the address bar (right-click and select the paste icon, or right-click and then press Ctrl+V at the same time on your keyboard) and then press enter to go to that location:



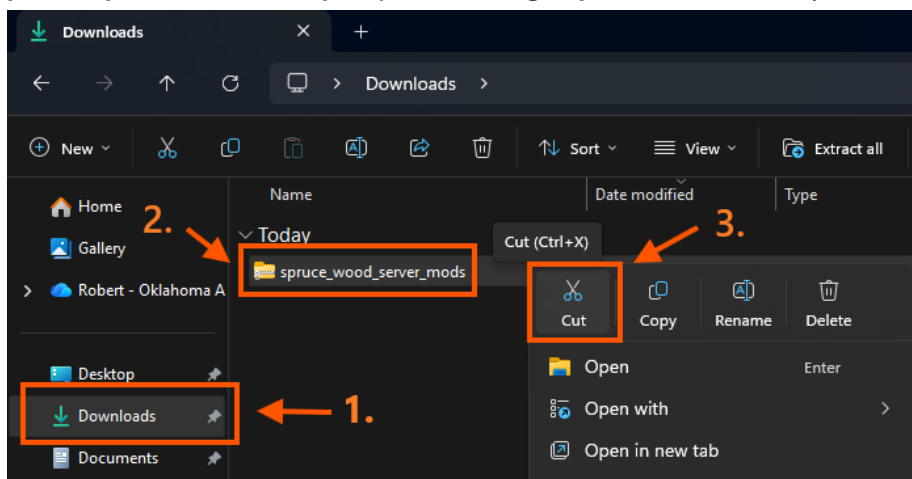
4. You'll see the files and folders at that location. Now you need to right-click on the **mods** folder and then select Pin to Quick access with the left mouse button:



This will make a shortcut in File Explorer on the Quick access menu so that you can easily cut and paste the zip file you downloaded earlier into the mods folder:

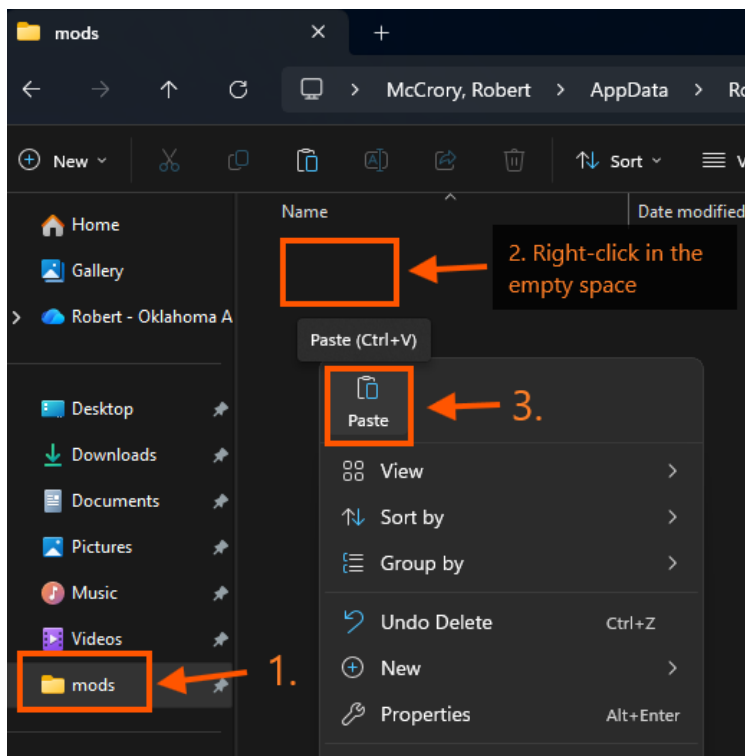


5. Now open the Downloads folder by clicking on it in the Quick access menu on the left.
6. Right-click on the spruce_wood_server_mods.zip file you downloaded earlier, and then click on the **Cut** icon (alternatively, left-click once on the .zip file, then press Ctrl+X at the same time on your keyboard to Cut if you prefer using keyboard shortcuts).

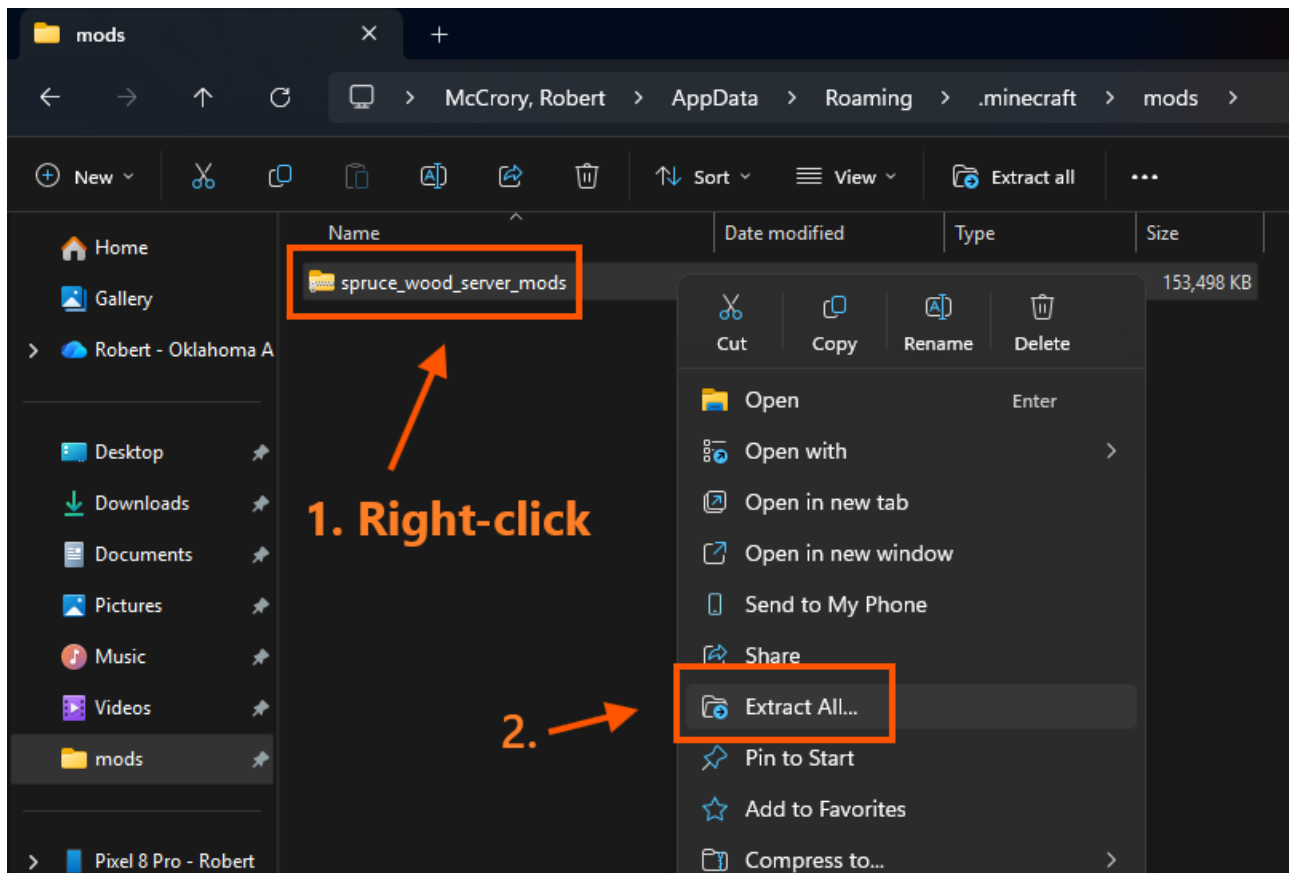


7. Now click on the newly created mods shortcut on the Quick access menu on the left to open the mods folder.
8. In the mods folder, paste the spruce_wood_server_mods.zip file by right-clicking in the empty space and selecting Paste – or by pressing Ctrl+V at the same time on your keyboard – or by

clicking on the paste icon in the toolbar:

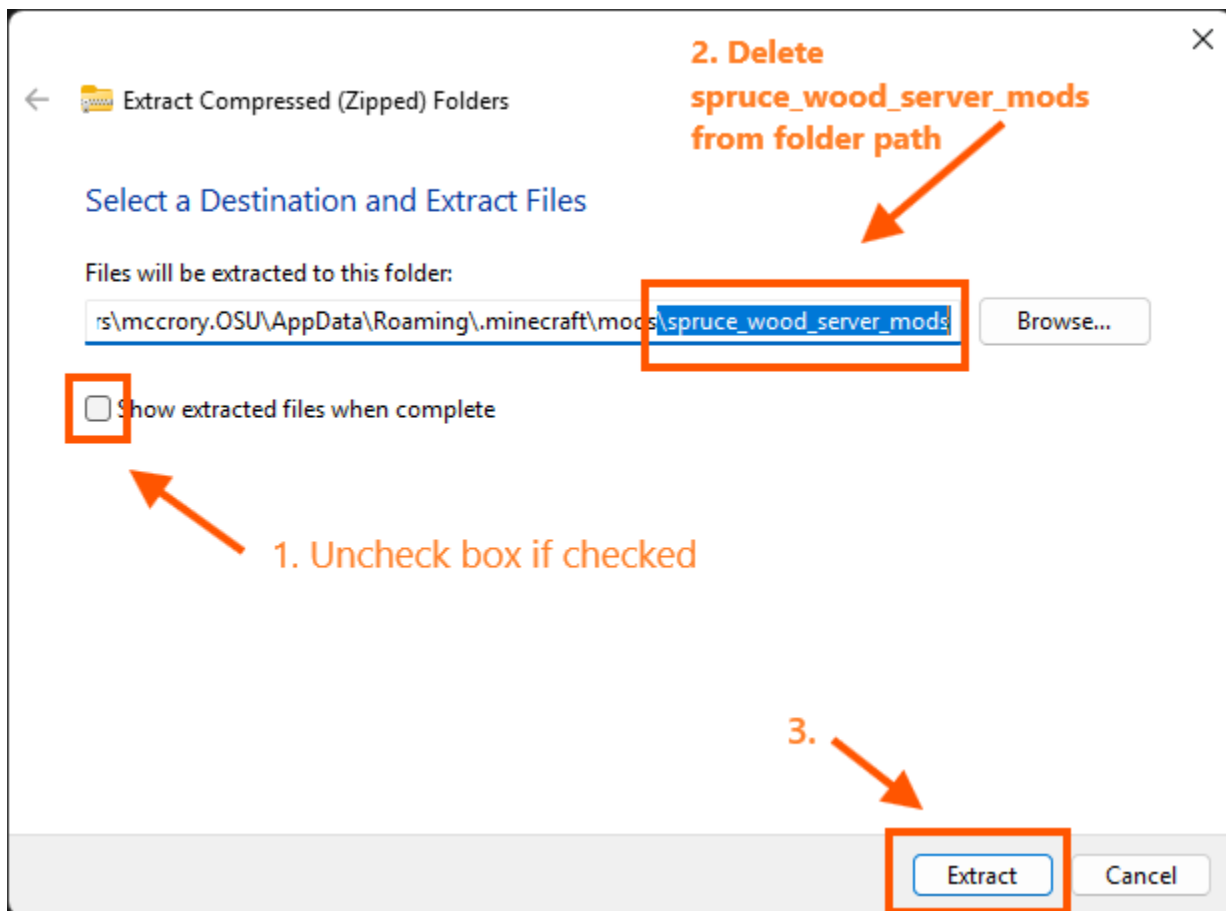


9. Now that the zip file is in the right location, we need to “unzip” it (extract) into the folder. Right-click on the file then select **Extract All...**

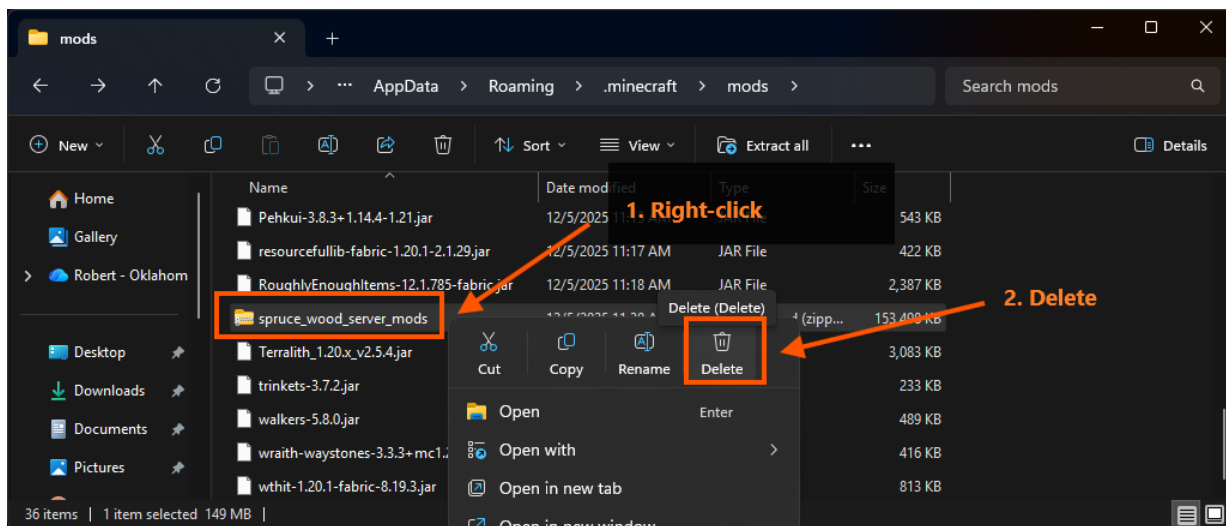


10. On the window that appears **uncheck** the box next to **Show extracted files when complete**, we’re already in that folder so we’ll see the files anyway without needing it to open a new window for us. Next, delete **\\spruce_wood_server_mods** from the folder path, we want the files to extract

directly into the mods folder and not into a subfolder. Now click on the **Extract** button.

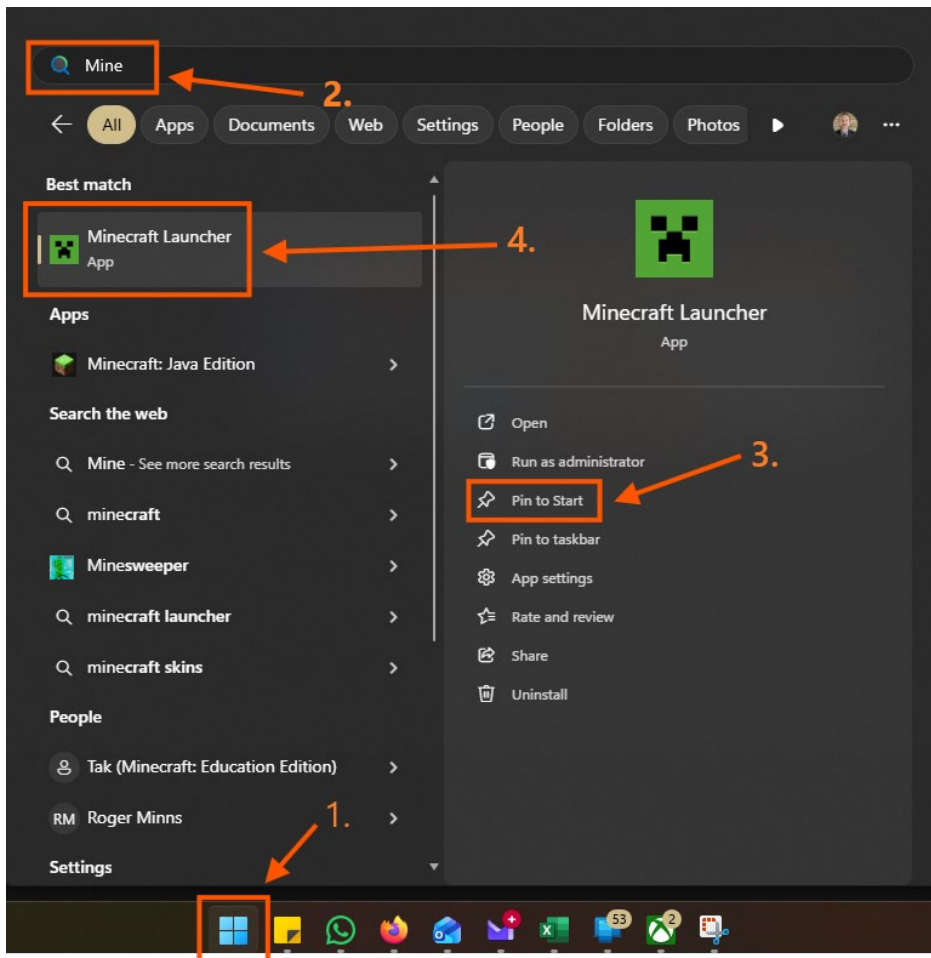


11. Finally, we need to delete the zip file from the mods folder now that the mods are extracted. Right-click on the zip file and select Delete, or left-click the zip file and press the Del key (or Delete) on your keyboard to delete the file. You are now done installing the mods onto the PC.

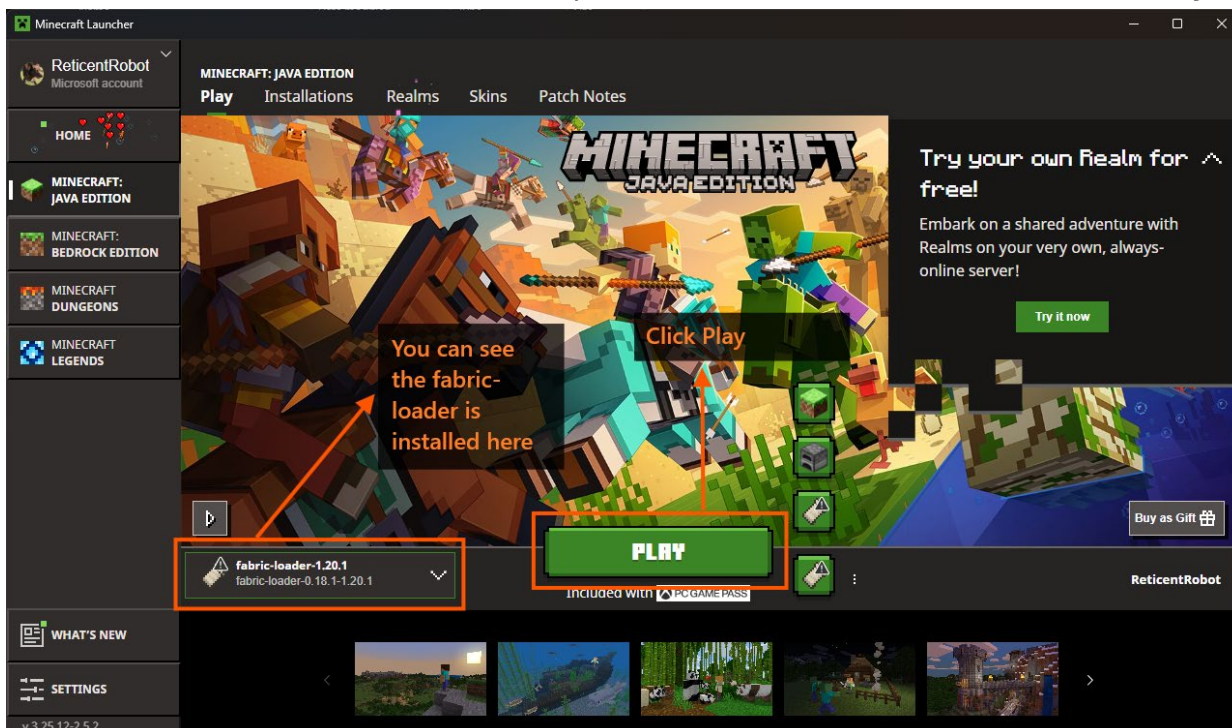


Connecting to the Server

With Fabric Launcher installed and the mods in place, you can now open the **Minecraft Launcher** again. To find the Minecraft Launcher, click on the **Windows Logo icon** in the taskbar, then start typing **Minecraft** until the **Minecraft Launcher** appears on the Start Menu under Best match. You might optionally want to click on **Pin to Start** and/or **Pin to taskbar** to make it easier to find in the future:



With the Minecraft Launcher opened, select **Minecraft: Java Edition** from the left menu. You should now see the Fabric Loader installed on the drop-down menu on the bottom left, click on **Play**..



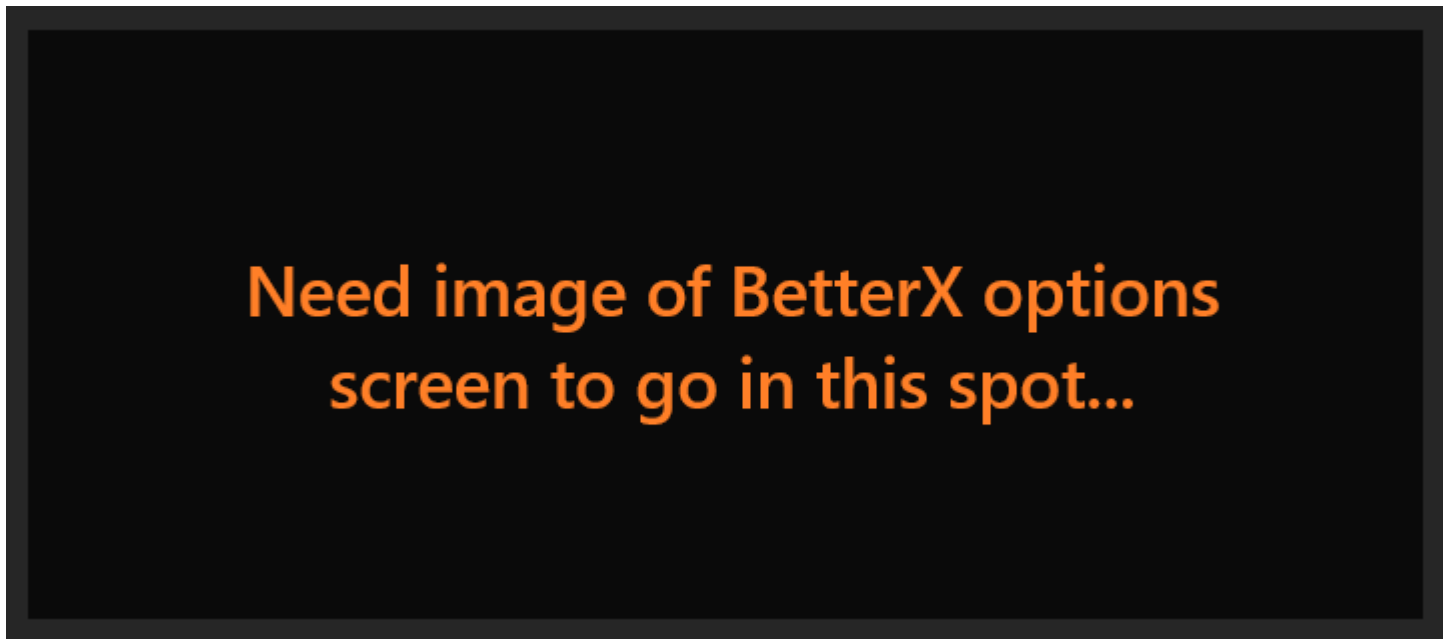
It may need to download and install some things, give it some time (it may look like nothing is happening

for a while – it may take a few minutes to load) and eventually a new Minecraft: Java Edition window will open.

You may get a screen warning you about Third-Party Online Play. Click the box here if you never want to see this warning screen again when playing Multitplayer, then click on Proceed:

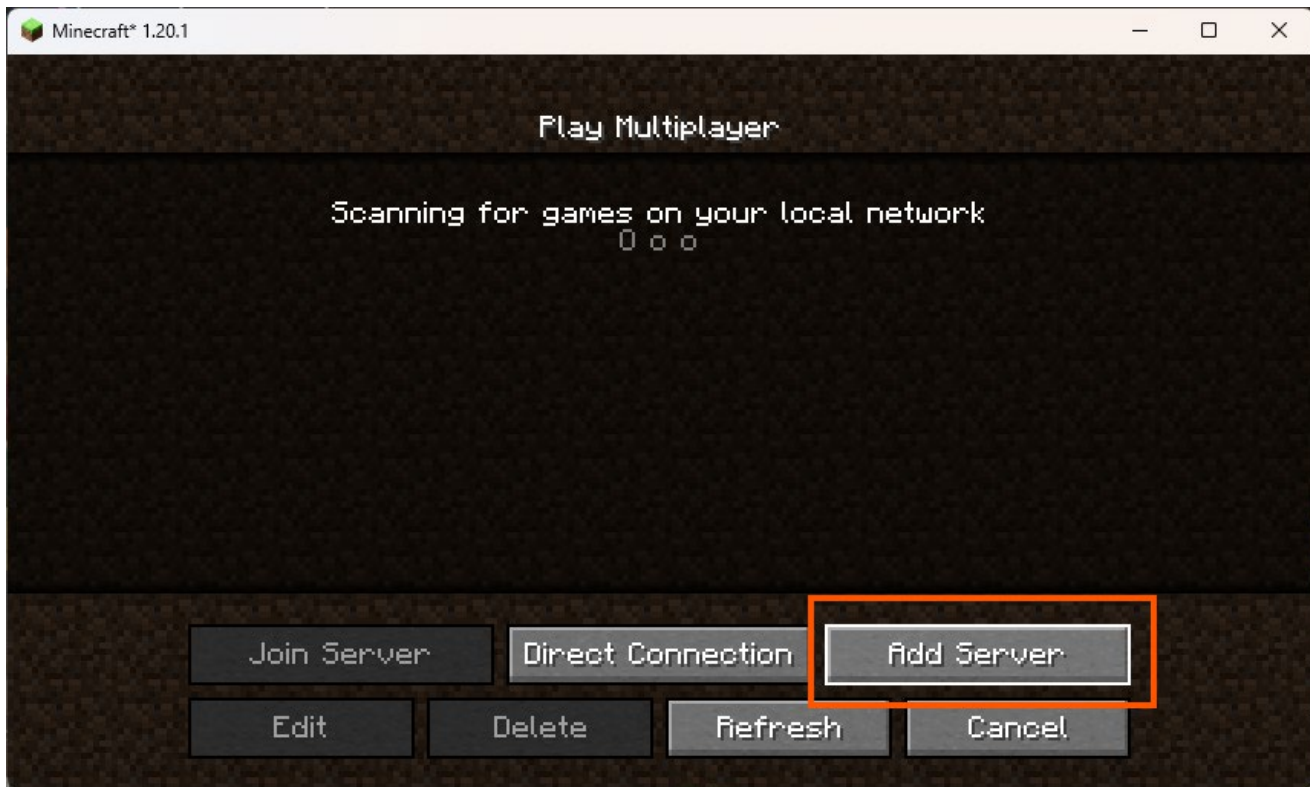


You'll see a BetterX notification screen when it finally loads (look for new icons in your taskbar, it may load behind another window without you seeing it), click on the box next to Disable Experimental Warning Screen on Load to keep it from loading with this screen in the future, then scroll to the bottom and click on **Proceed**.



You'll load into the Minecraft Java Edition main menu. From here, click on **Multitplayer**. Click on Add

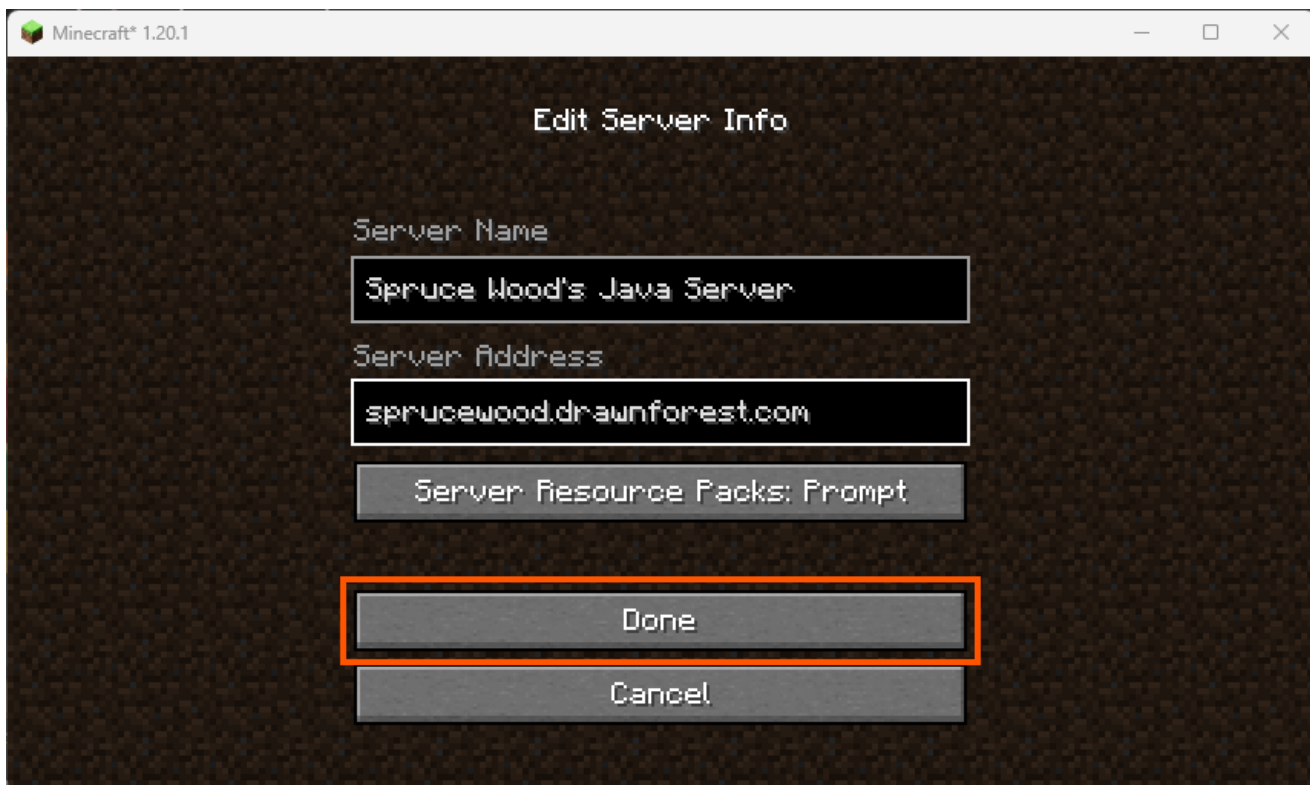
Server in the bottom-right corner:



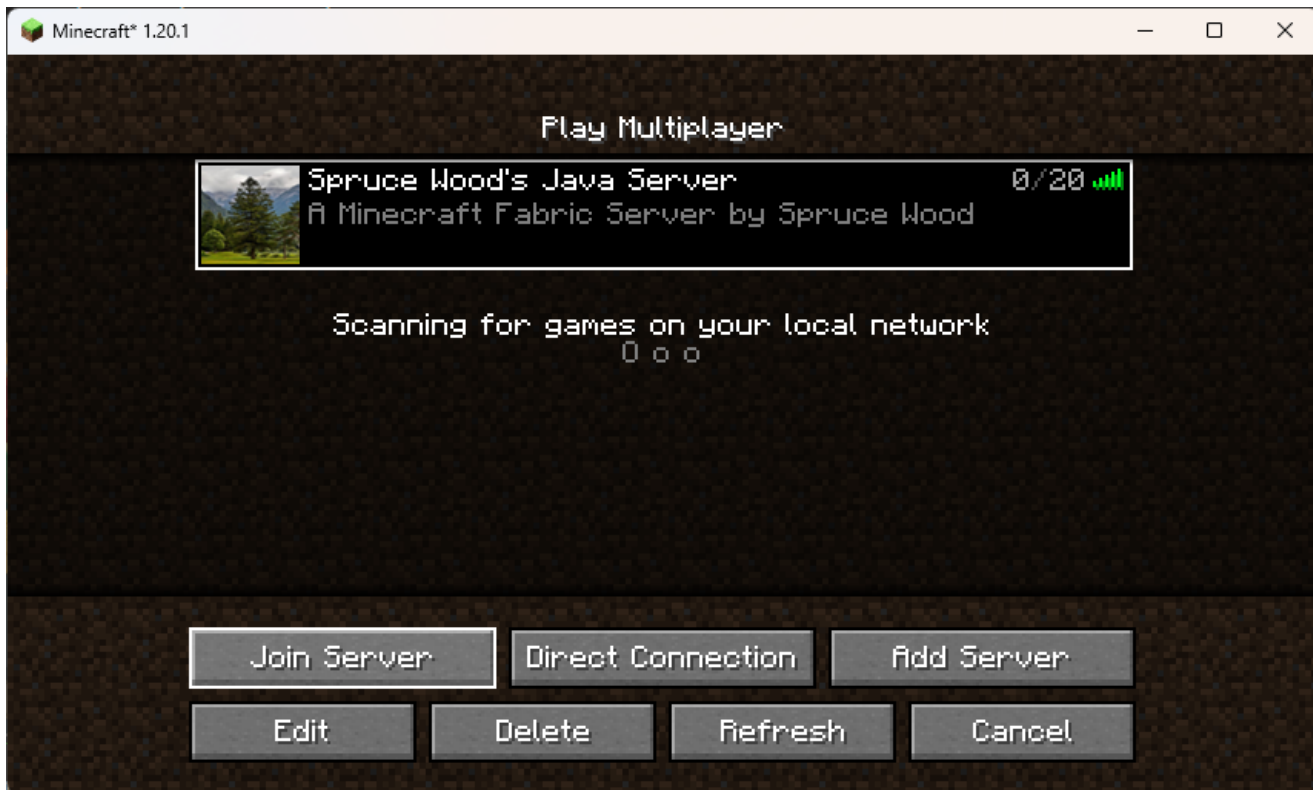
Give the server whatever name you'd like. I'll use **Spruce Wood's Java Server** in this example, but it can be anything you want to recognize it by. For the server address you'll want to enter the following:

sprucewood.drawnforest.com

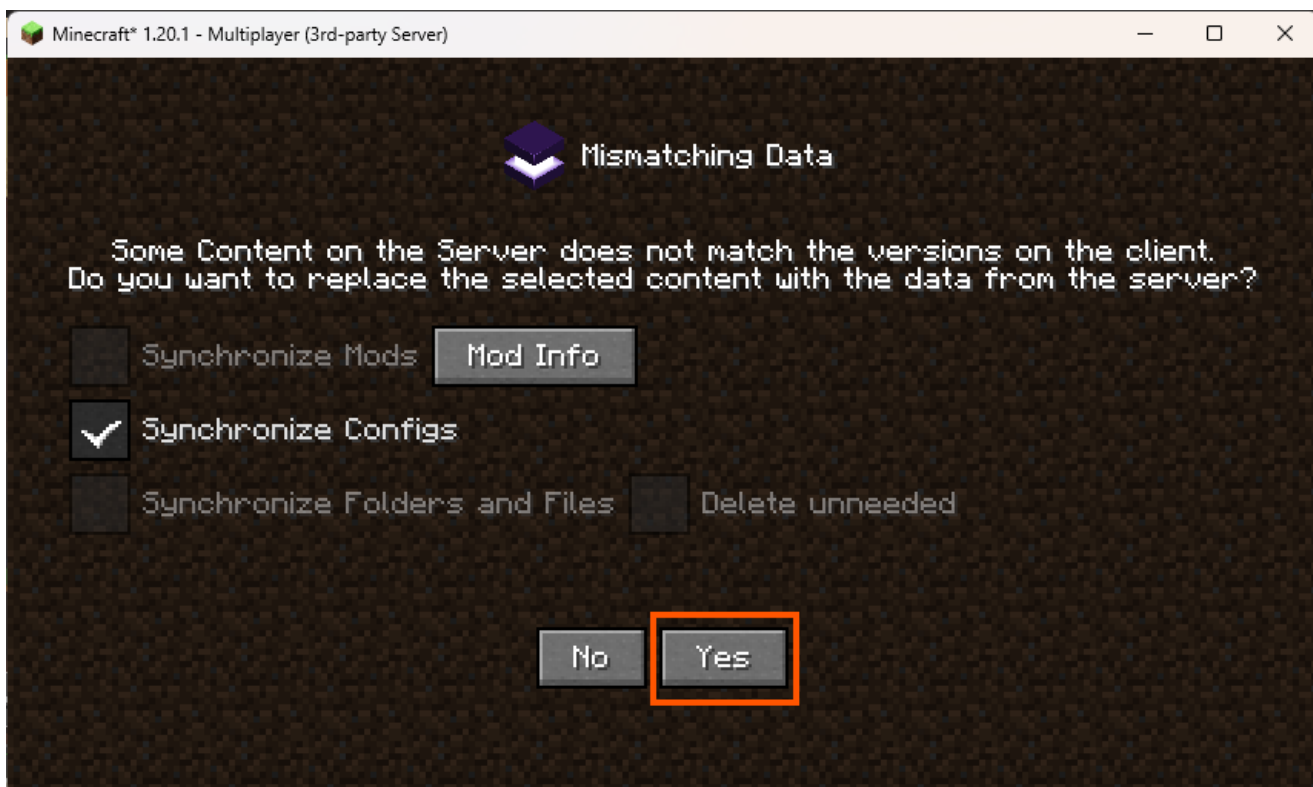
Click **Done** when you are finished.



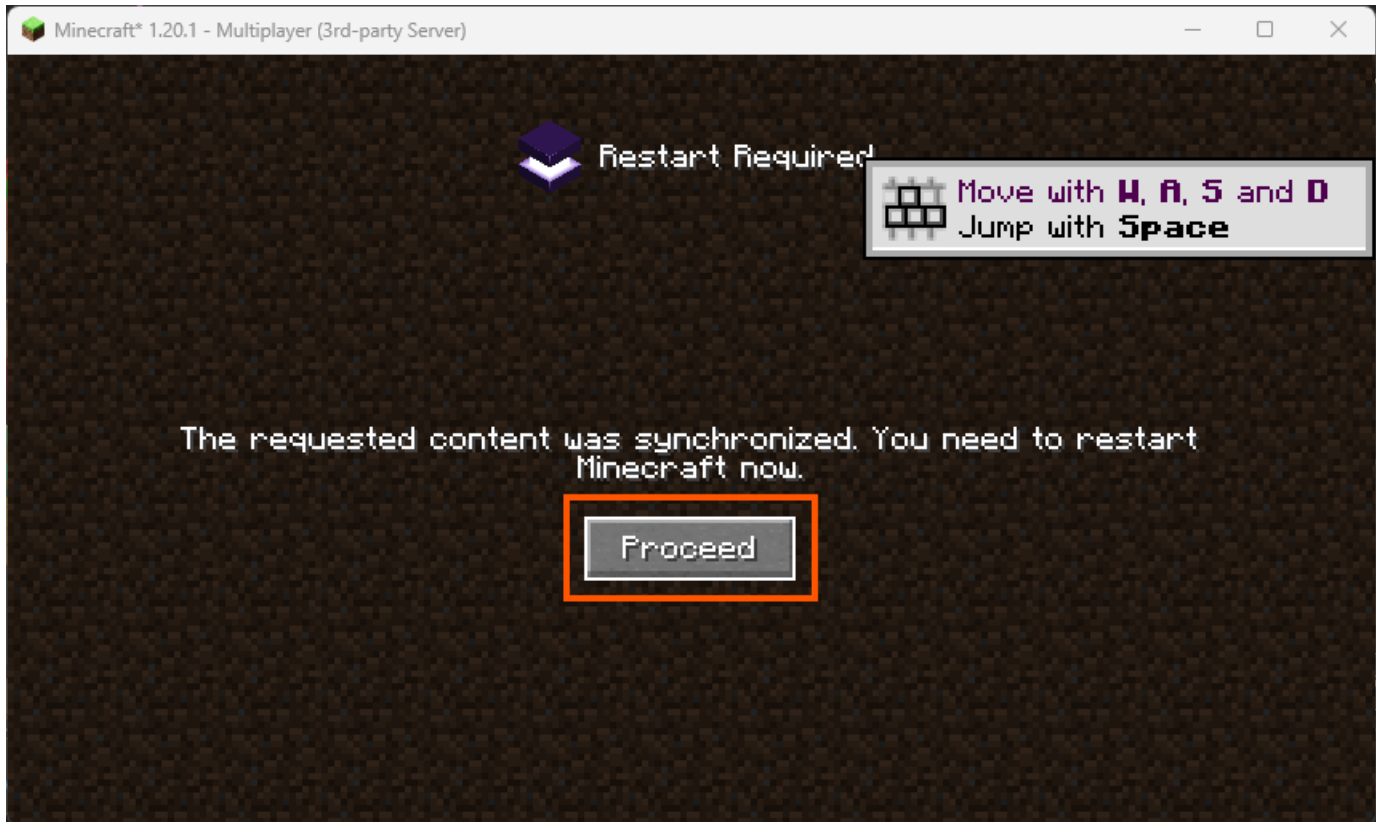
You'll see the server you added appear in the server list under Play Multiplayer. Click on the server once to select it, then click on **Join Server**:



You'll now load into the server. The server config file will be different than the config file on your machine, this is normal and expected. You'll get a message that says **Some Content on the Server does not match the versions on the client. Do you want to replace the selected content with the data from the server?** Click on **Yes** to continue.

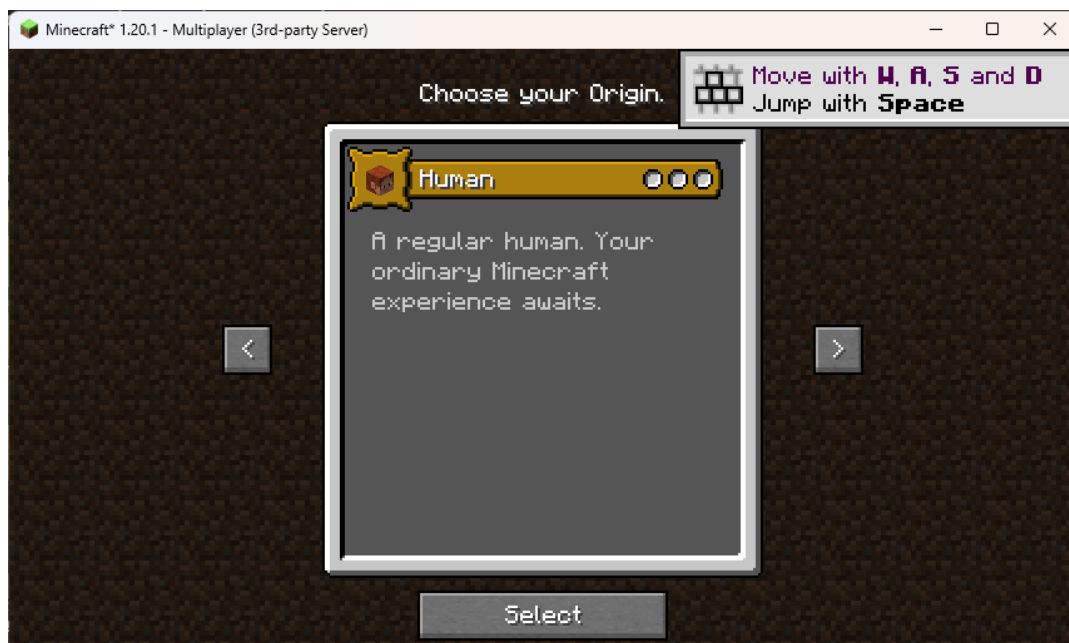


You'll get another message that says **The requested content was synchronized. You need to restart Minecraft now.** Click on the **Proceed** button.



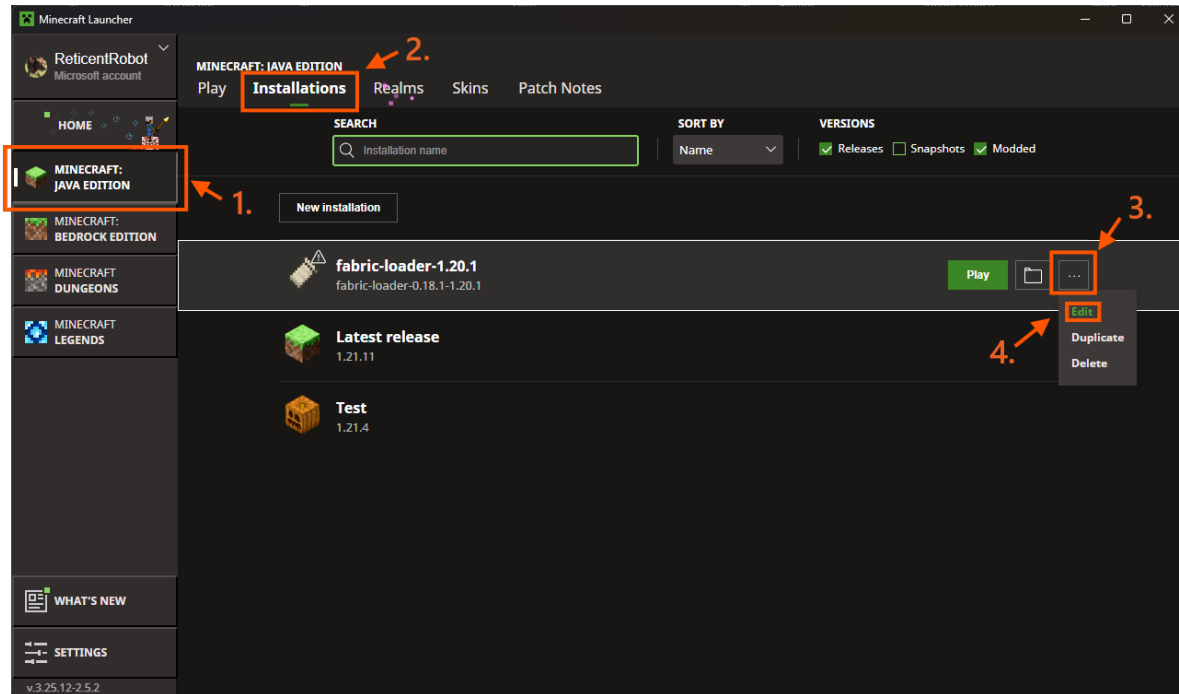
The window will close itself and return you to the Minecraft Launcher. Click on **Play** again. You'll see the word **Play** turn into **Preparing** with a progress bar under it. Give it a few minutes again while it loads the client.

Once it starts back up, click on Multiplayer again, select the server, then click on Join Server. You'll be presented with a screen to **Choose your Origin**. Follow the prompts from here and have fun!!

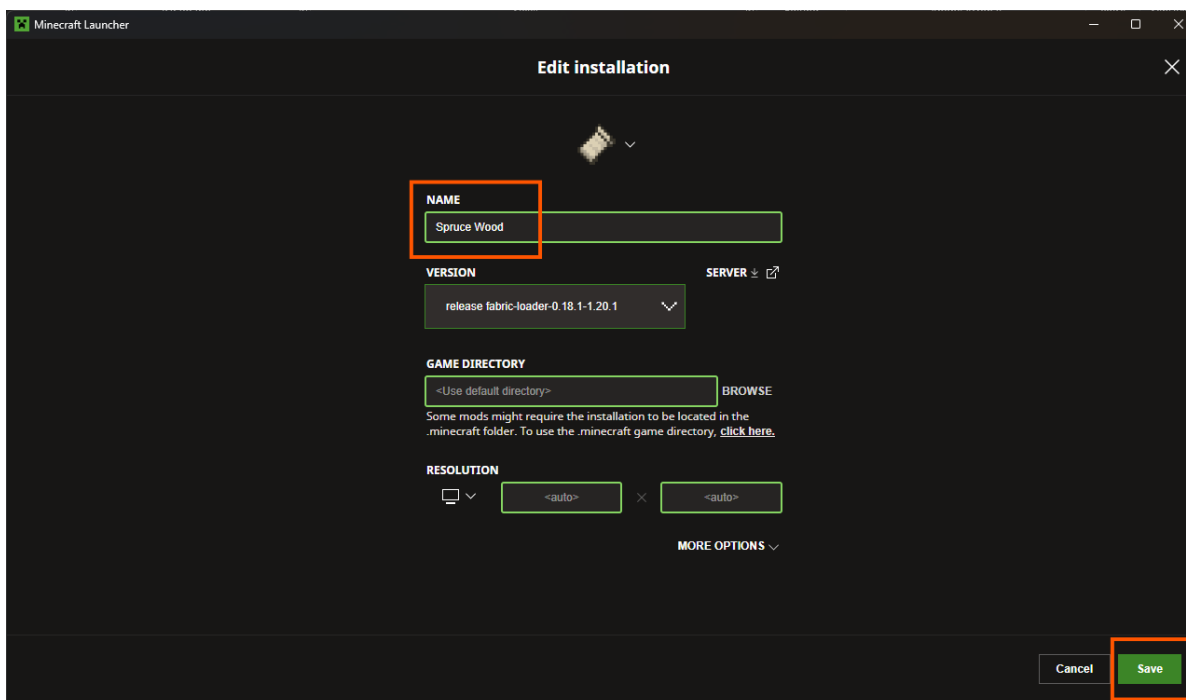


Renaming the Fabric 1.20.1 Install

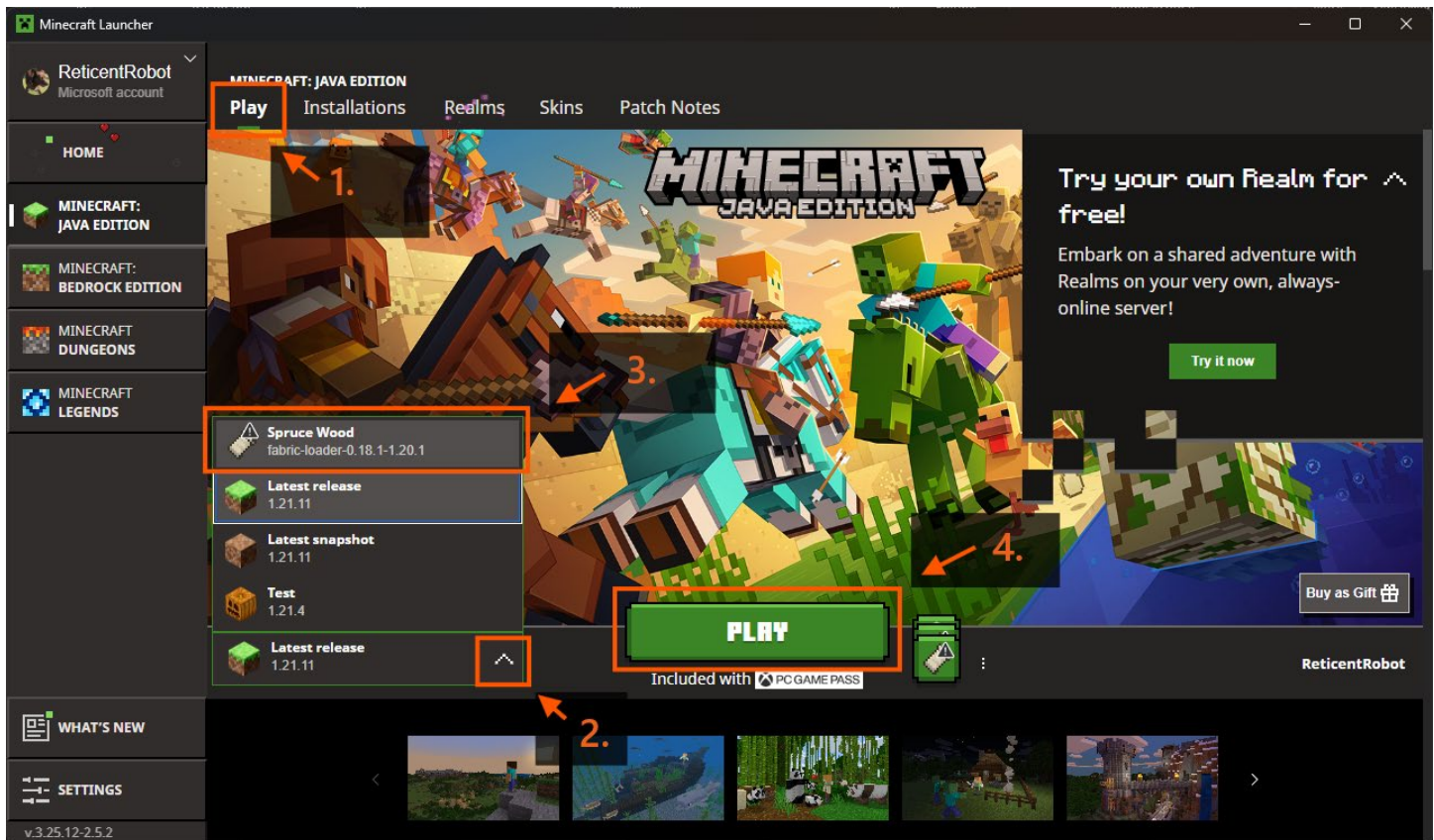
You may want to rename the Fabric 1.20.1 install needed to play on the sprucewood.drawnforest.com server to make it easier to recognize, particularly if you plan on using multiple installs or playing on multiple fabric servers. To do this, open the Minecraft Launcher, then select **Minecraft: Java Edition** from the left menu. At the top, click on **Installations** in the horizontal menu:



On the edit page, rename the Installation to help you recognize what it is – something like Spruce Wood, for example, then click **Save**:



Next, click on **Play** in the horizontal menu to get back to the Play screen. In the bottom left you may need to click on the **chevron** ^ (2. in the screenshot below) and then select your renamed Installation from the list. Once it is selected you can click on **Play** like normal.



Using a Gamepad/Controller on Java Minecraft

Would you like to use a Playstation/Xbox/Nintendo gamepad to play? You can install this mod into your mods folder to enable gamepad support on Java edition: <https://www.curseforge.com/minecraft/mc-mods/controllable>

You can find the version for 1.20.1 here: <https://www.curseforge.com/minecraft/mc-mods/controllable/download/6171420>

You will also need to add the [framework mod](#) to your mods folder:

<https://www.curseforge.com/minecraft/mc-mods/framework/download/6531429>

Playing Minecraft: Java Edition on Unofficial Clients

Minecraft: Java Edition may be playable on an iPhone/iPad or an Android phone or tablet by using unofficial clients such as MojoLauncher or Amethyst. You will need to purchase Minecraft: Java Edition with your Microsoft account on another *officially* supported device before you can play on your mobile device and then sign in with that Microsoft account on Minecraft: Java Edition after it has been installed with MojoLauncher or Amethyst.

Installing Minecraft: Java Edition on Android Devices

The easiest method is to download MojoLauncher for Android directly from the [Google Play store](#) on your device. If your Android device does not have the Google Play store, or you'd prefer to not use the Google Play store, you also can sideload MojoLauncher:

Follow these simple steps to install MojoLauncher on your Android phone:

1. Visit [MojoLauncher's official website](#).
2. Tap the "Download Now" button on the screen.
3. If required, allow "Unknown Sources" while installing.
4. Open the app & log in with your Minecraft account.
5. Play!

Follow the instructions on their website for how to use the Fabric Loader and install the mods.

Alternatively, there is also an Android version of Amethyst that you can find instructions for downloading and installing here: <https://github.com/AngelAuraMC/Amethyst-Android?tab=readme-ov-file#getting-amethyst>

Installing Minecraft: Java Edition on iOS Devices

MojoLauncher is not available on the App Store. You'll need to sideload the application onto your device by following these steps:

1. Go to the [official MojoLauncher download](#) page using Safari.
2. Tap on Download for iOS.
3. You'll see a pop-up asking to install a profile.
4. Go to Settings > Profile Downloaded.
5. Tap Install and enter your passcode if required.
6. MojoLauncher will appear on your home screen.

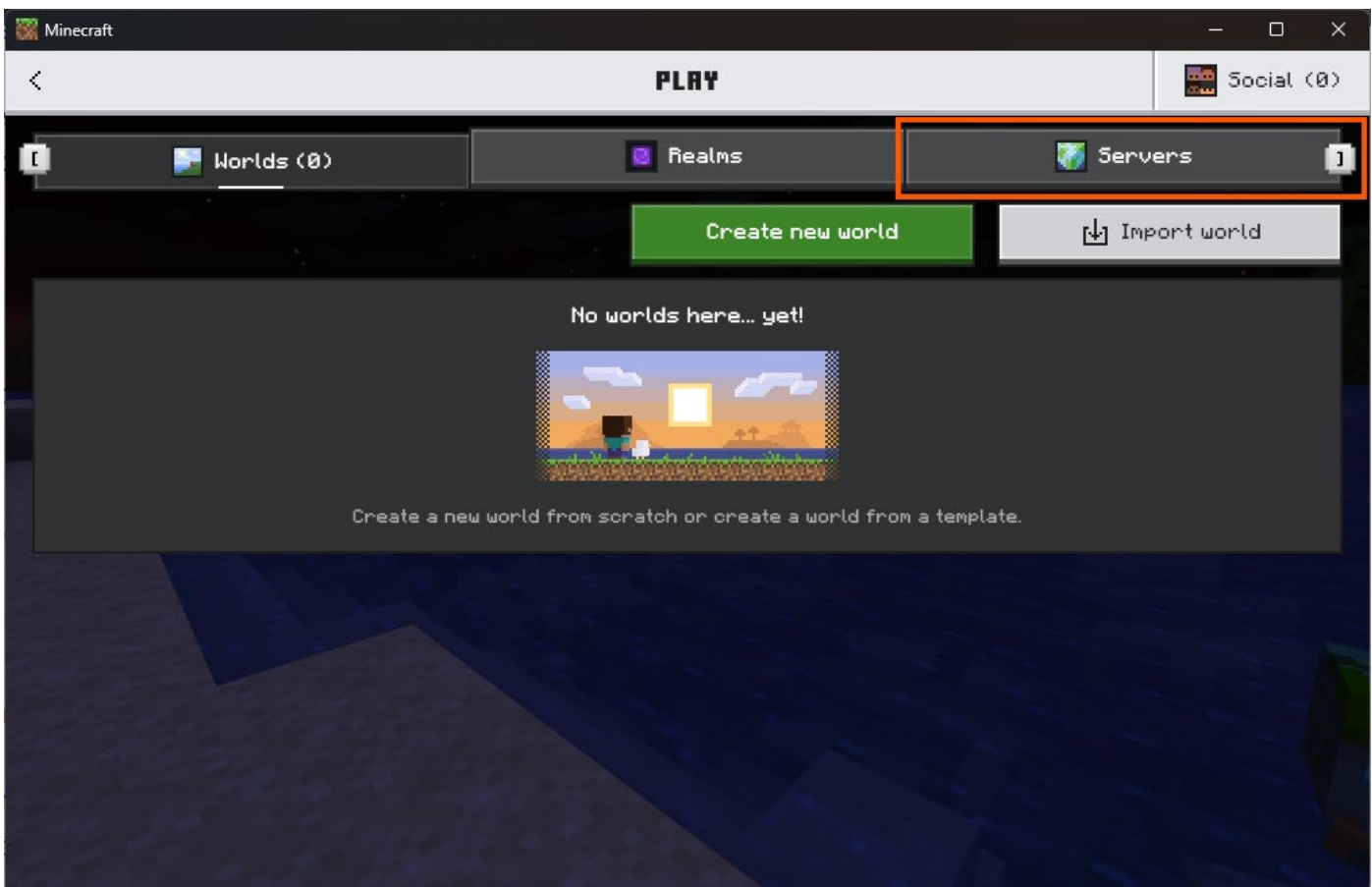
Follow the instructions on their website for how to use the Fabric Loader and install the mods.

Alternatively, there is an iOS version of Amethyst that you can find instructions for downloading and installing here: <https://github.com/AngelAuraMC/Amethyst-iOS>

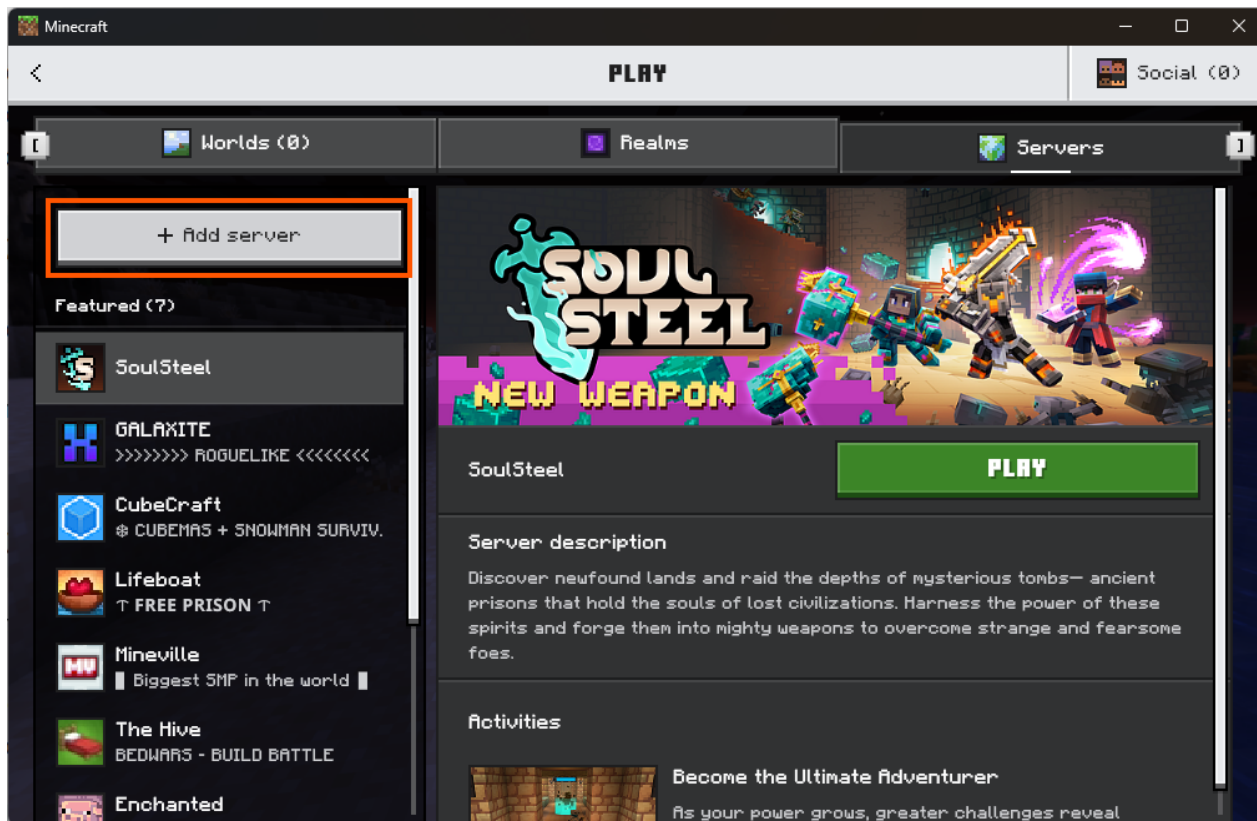
Bedrock Server - Empire

This server will only allow connections from the Bedrock version of Minecraft available on Windows, iOS, and Android.

To play on this server, open Minecraft on your device. Click on **Play**. At the top of the screen you'll see Worlds, Realms, and Servers. Click or tap on **Servers**:



Now click on the **+ Add Server** button in the top-left:



Next, give the server a name. This server is named **Empire**, so I'll use that here. For the **Server address** use **empire.drawnforest.com**. Leave the port as the default (19132). Finally, click the **Add and play** button:

